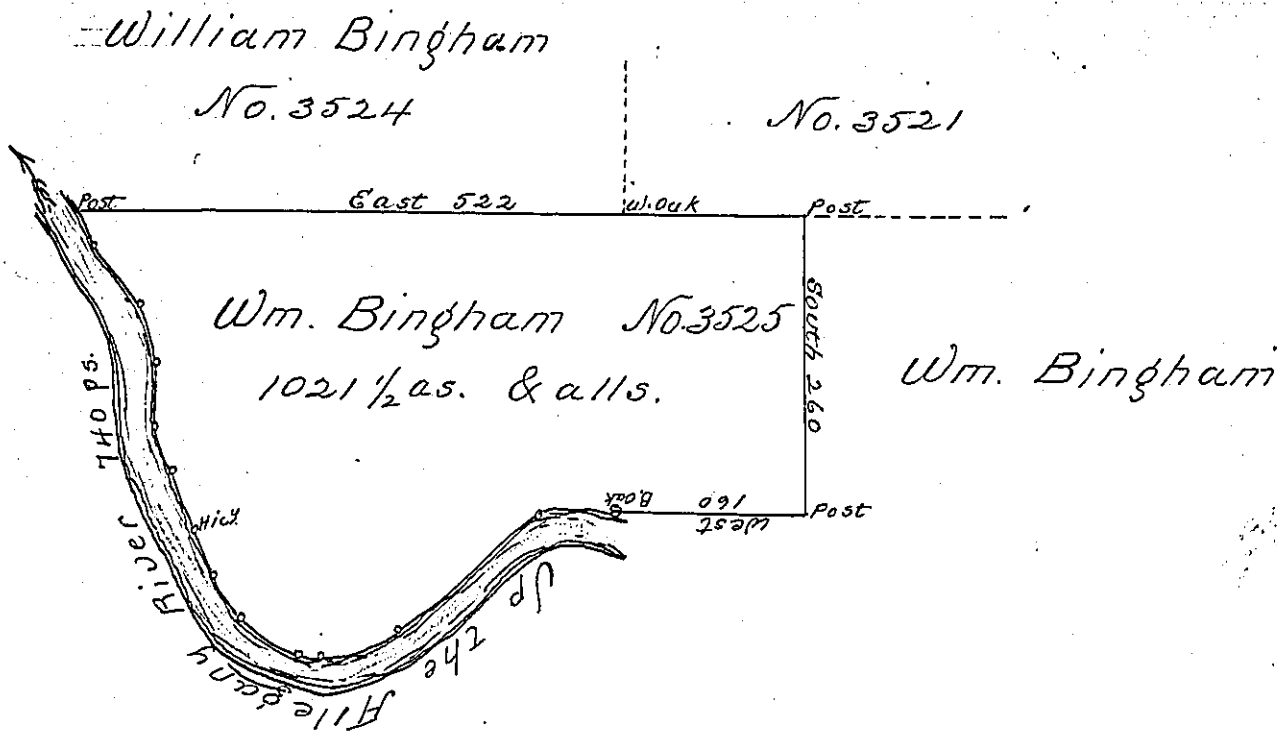


Courses & Distances down
the Allegany River from
the Post to B.A.

- S. 31. E. 94
- S. 17. E. 46
- South 62
- S. 14. E. 42
- S. 19. E. 46 Hicy
- S. 25. E. 44
- S. 39. E. 36
- S. 50. E. 56
- S. 55. E. 16
- N. 68. E. 70
- N. 54. E. 160
- East 68 B.A.
- 740



In pursuance of a Warrant No. 3525
dated the 14th day of Decr. 1792 Surveyed 5th
August 1794 To William Bingham The above
described Tract of Land situate on the main
Allegany River in the late purchase North-
umberland County in District No. 6. Contain-
ing one thousand & twenty one acres & an half &
the allowance of six p[er]cent

p.

Jno. Brodhead Esq.

Daniel Brodhead Esq.
Surveyor General

IN TESTIMONY that the above is a copy of the original remaining on file in
the Department of Internal Affairs of Pennsylvania, made
conformably to an Act of Assembly approved the 16th day of
February, 1833, I have hereunto set my Hand and caused
the Seal of said Department to be affixed at Harrisburg,
this sixth day of August 1901

James W. Fatta
Secretary of Internal Affairs.